

PADDLE FOR THE BORDER

Frequently Asked Questions

When is Paddle for the Border?

Saturday, May 7, 2022, 8:30 a.m. - 1:00 p.m.
Launch Time: 8:30 a.m.

Who can participate?

Adults and youth are welcome to participate. Participants must be able to swim and must bring and wear a personal flotation device (PFD). Youth participants must be accompanied by an adult chaperone (one-to-one ratio). Youth ages 12-17 may paddle in a separate boat; however, they must be accompanied by an adult chaperone in another boat. Youth ages 11 years or younger must paddle in the same boat with an adult. Each participant is a separate registration, including children.

Where does Paddle for the Border take place?

Launch Point: The Dismal Swamp State Park in South Mills, North Carolina.

GPS: 36.5057, -76.3551

Destination: The Ballahack Boat Ramp on the Dismal Swamp Canal Trail at Ballahack Road in Chesapeake, Virginia. The paddle trip is 7.5 miles. **GPS:** 36.604, -76.381

Do I have to provide my own boat/kayak?

You are invited to provide your own kayak, canoe or stand-up paddleboard for the event. For the safety of all participants, no motorized or inflatable watercrafts are allowed. A limited number of kayaks and canoes are available to rent through Chesapeake Parks, Recreation and Tourism and the Dismal Swamp State Park. Contact dismal.swamp@ncparks.gov or visit <http://www.cityofchesapeake.net/paddle> to reserve a watercraft online as part of your Paddle for the Border registration. Kayaks are delivered to site and picked up, day of Paddle.

Is food provided?

Yes! Breakfast and lunch are provided with your registration. Vegetarian options will be available.

What should I bring to the event?

Your own paddleboard, canoe or kayak and a Coast Guard approved personal flotation device (PFD). If you rent a canoe or kayak, paddles and PFDs are included in the rental and will be located at the launch site. You may also want to bring binoculars, camera, sunscreen, bug repellent, snack, beverage and a change of clothes. Restrooms are accessible at the launch point and portable toilets are available at the end of the paddle.

Contact

Dismal Swamp State Park

Phone: 252-771-6593

Email: dismal.swamp@ncparks.gov

Website: www.ncparks.gov

Chesapeake Parks, Recreation and Tourism

Phone: 757-382-6411

Email: specialprograms@cityofchesapeake.net

Website: www.cityofchesapeake.net/paddle

Dismal Swamp Canal Welcome Center

Phone: 252-771-8333

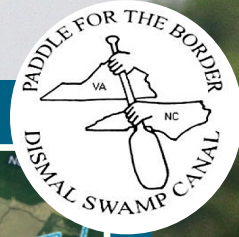
Email: dscwelcome@camdencountync.gov

Website: www.dismalswampwelcomecenter.com



PADDLE FOR THE BORDER

Frequently Asked Questions cont'd



How do I get my vehicle/boat to the start/finish line?

Shuttle transportation is provided from the parking area in Chesapeake, Virginia, to the boat starting line at the Dismal Swamp State Park .

1. Off-load your boat and passengers at the start line in South Mills, NC.
2. After unloading your watercraft, proceed approximately 8.2 miles north on US-17 to Glencoe Road to park your vehicle near the finish line in Chesapeake, VA. Staff will direct you where to park.
3. Ride the bus shuttle from the parking area at Ballahack Boat Ramp in VA, back to the launch site at Dismal Swamp State Park/ Dismal Swamp Rest Area, NC. Pick up your registration package and enjoy breakfast at the Dismal Swamp State Park.
4. Paddle for the Border! Afterwards, enjoy a picnic lunch at the Ballahack Boat Ramp in Chesapeake. Assistance is provided to transport your watercraft to your vehicle after the event.

Is there a registration fee?

Registration fee is \$45 per person (not refundable unless event is cancelled). Registration fees include shuttle transportation, "grab-and-go" breakfast, picnic lunch and commemorative hat or t-shirt.

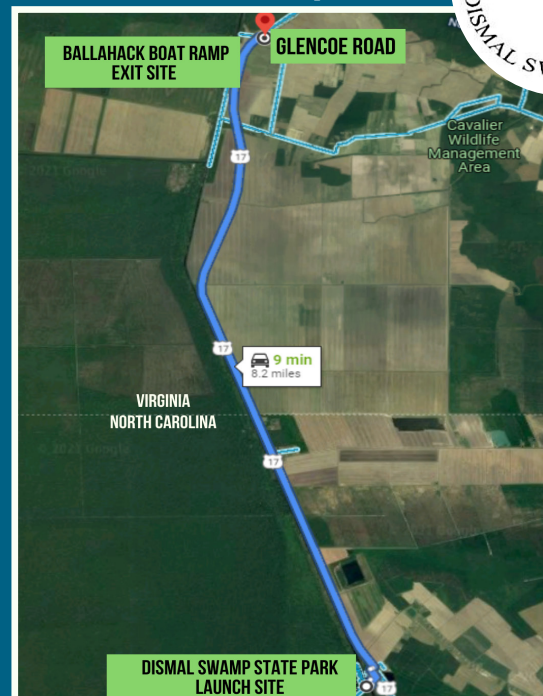
How do I register?

Online Registration:

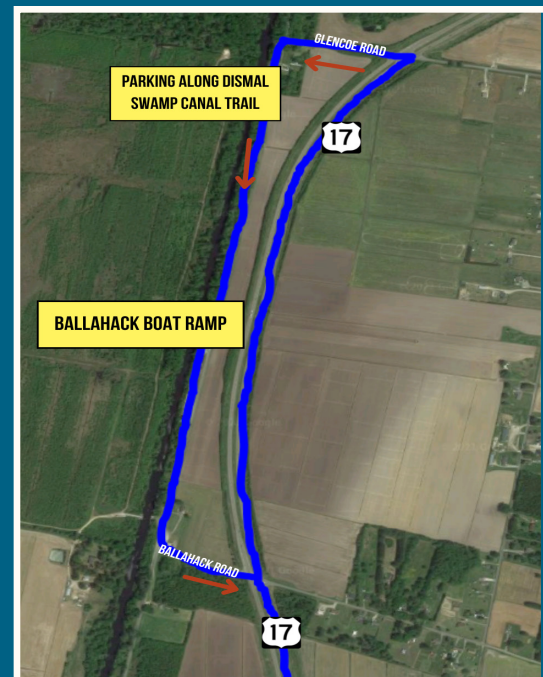
www.cityofchesapeake.net/paddle

Registration form, participation waiver and fees may also be submitted via Mail-in, Walk-in, or Drop-off to the Chesapeake Visitor Center located at: 1224 Progressive Drive, Chesapeake, VA 23320. Each registered person must submit a signed waiver.

Full Event Map View



Ballahack/Glencoe View



REGISTER EARLY - EVENT FILLS QUICKLY

Open Registration: January 5th - April 1st
(Online, Mail-in, Walk-in or Drop-off)

Late Registration: April 2nd- Until Full
(Online Only; Add \$10 Late Fee)