

1

2

3

4

5

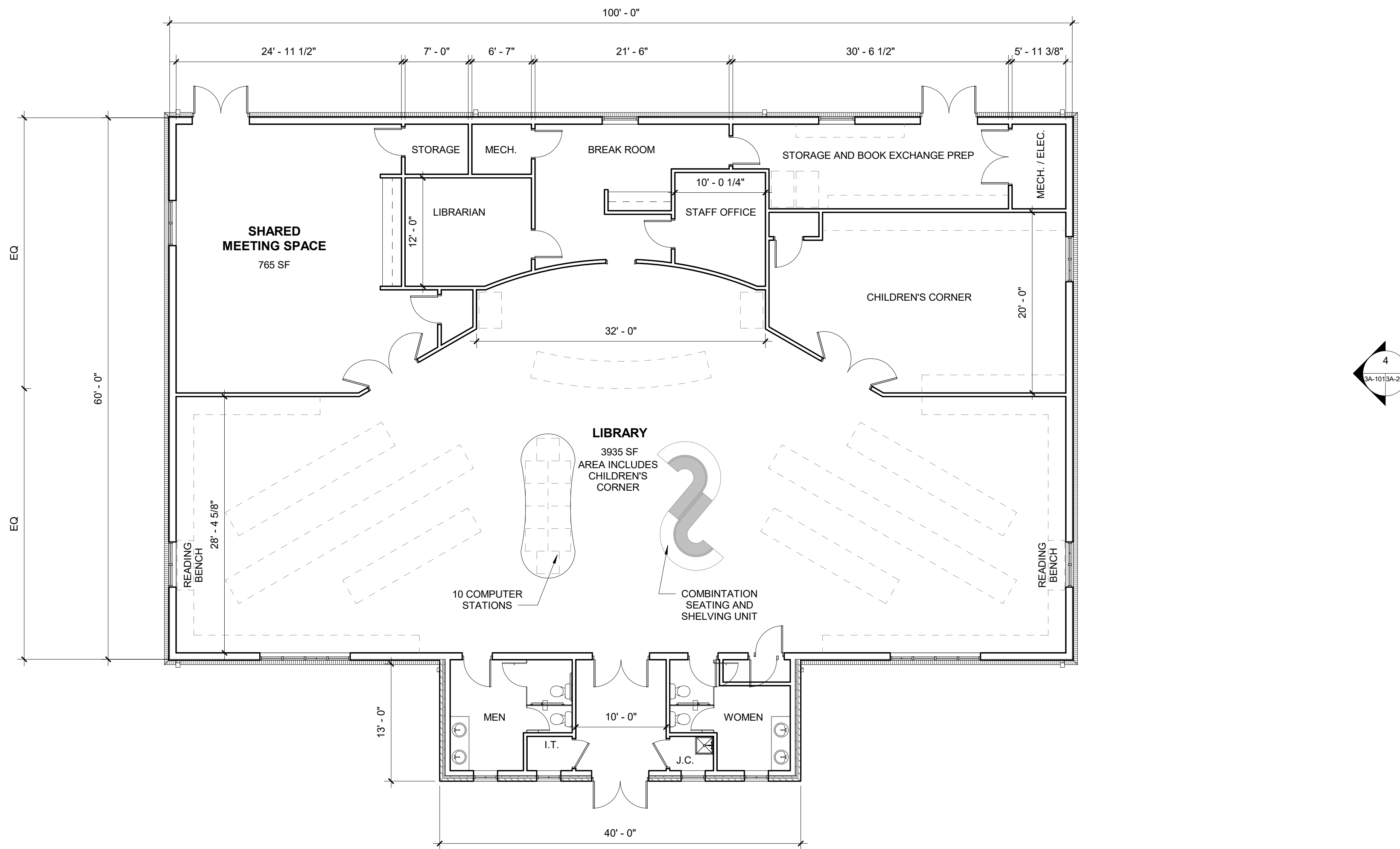
A

B

C

D

E



CAMDEN COUNTY, NORTH CAROLINA

# LIBRARY BUILDING

8.07 ACRE LOT ADJACENT TO 117 NORTH CAROLINA HWY 313 S

SCHEMATIC DESIGN

SHEET INFORMATION

REVISIONS		
NO.	DESCRIPTION	DATE

PROJECT NO.	20180026
DRAWN BY	KWW
CHECKED BY	JLB
DATE	2019.01.21
SCALE	1/8" = 1'-0"

SHEET NAME  
**LIBRARY FLOOR PLAN**

SHEET NUMBER  
**3A-101**

**LIBRARY FLOOR PLAN**  
Scale: 1/8" = 1'-0"

1

2

3

4

5

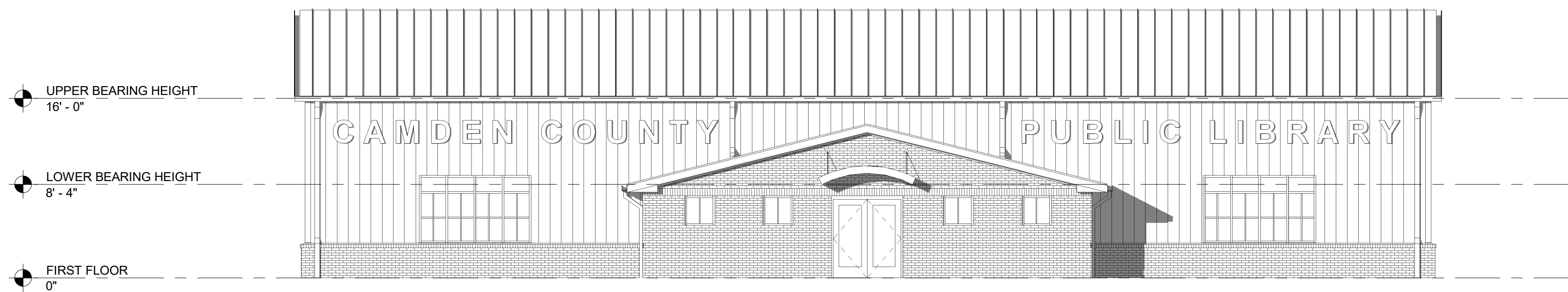
A

B

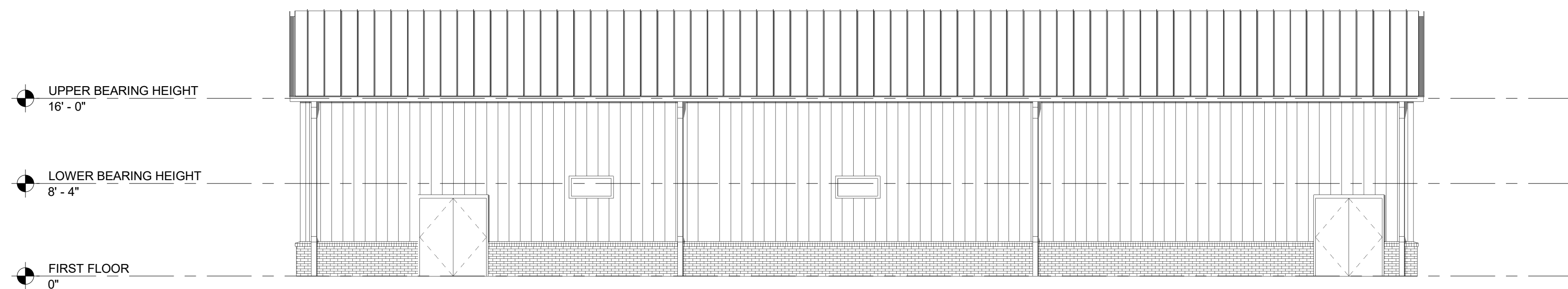
C

D

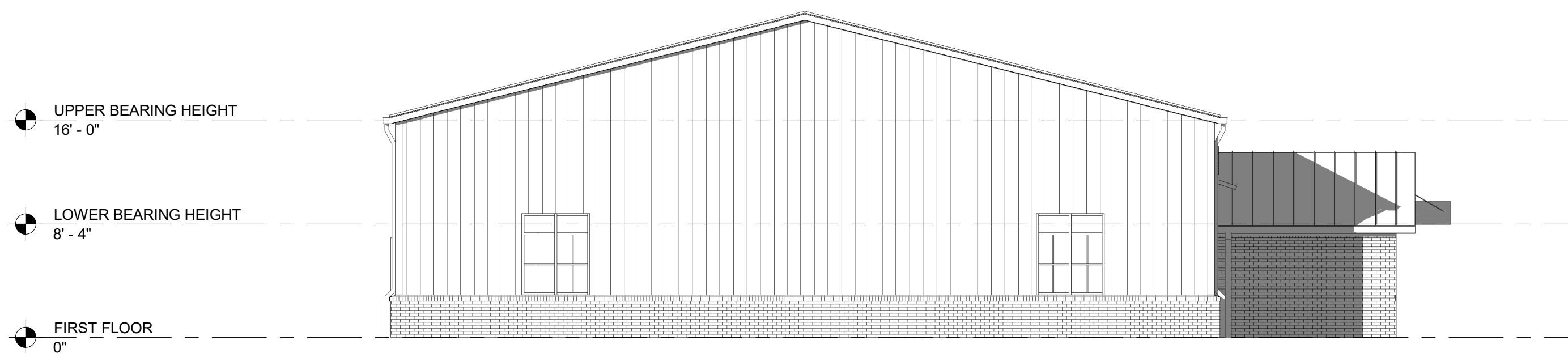
E



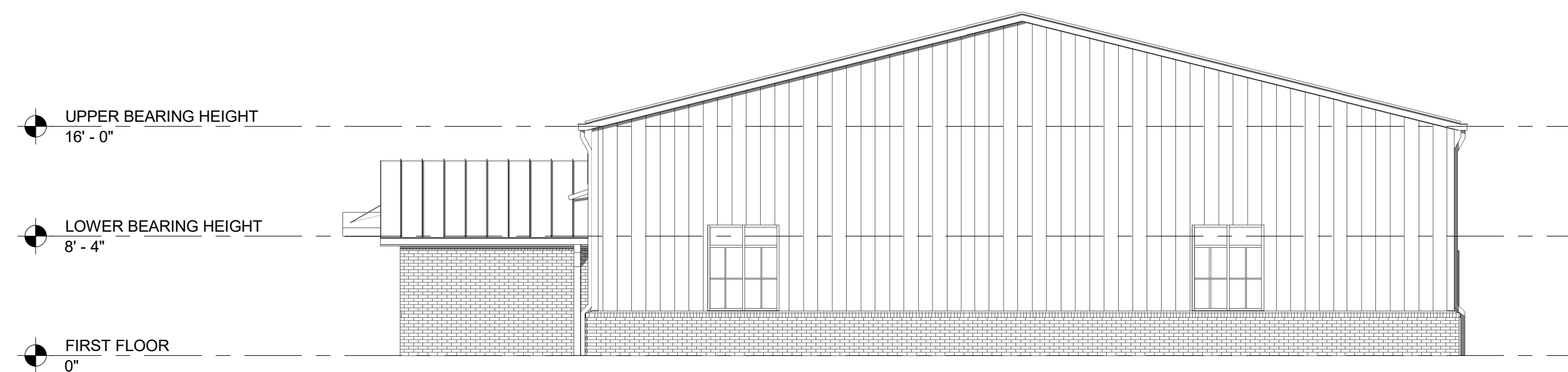
1  
FRONT ELEVATION  
Scale: 1/8" = 1'-0"



2  
REAR ELEVATION  
Scale: 1/8" = 1'-0"



3  
LEFT SIDE ELEVATION  
Scale: 1/8" = 1'-0"



4  
RIGHT SIDE ELEVATION  
Scale: 1/8" = 1'-0"

SHEET INFORMATION

REVISIONS		
NO.	DESCRIPTION	DATE

PROJECT NO.	20180026
DRAWN BY	KWW
CHECKED BY	JLB
DATE	2019.01.21
SCALE	1/8" = 1'-0"

SHEET NAME  
**LIBRARY  
EXTERIOR  
ELEVATIONS**

SHEET NUMBER  
**3A-201**